



# Rodson Universal Inc

[www.rodson.com](http://www.rodson.com)

[info@rodson.com](mailto:info@rodson.com)

Ref dg1051

## LINK-BELT 75 tons floating crane

**CHARACTERISTICS Self-propelled, twin screw, construction/crane vessel.**

### GENERAL

Type	Self-propelled, twin screw, construction/crane vessel.
Classification	RINA, coastal waters, 30 nautical miles.
Year built	1972, Ancona, Italy.
Crane	Pedestal mounted 75 metric tonne FMC LINK-BELT- TC 218
Refurbishment & S/S	November 2001 The Netherlands.
Next Special Survey	November 2006
Flag	Belize
Int. Tonnage Cert.	
Gross Tonnage	256 tonne
Net Tonnage	76 tonne

### DIMENSIONS

Length over all	34.30 meters (l 12.53 ft)
Length moulded	33.80
Breadth extreme	10.36
Breadth moulded	10.00
Depth	2.80
Draught max.	1.80

### MAIN ENGINES

Twin engines	Deutz SBF 6M 716 @ 258 HP, total 516 HP (380 Kw) 1500Rev. Reduction 1:3 Twin propellers, free running / Twin rudders
--------------	--

**SPEED** 8 Knots

**GENERATORS** 1 x 31 Kw Deutz air-cooled  
1 x 15 Kw Deutz air-cooled  
1 x 60 Kw Mobile deck generator

### CAPACITIES

Fresh water 18.8m<sup>3</sup>  
Marine diesel 67.0 m<sup>3</sup>  
Ballast : 229.0 m<sup>3</sup>

**HOLD** One large hold below main deck, 14 x 6 m (45.93 x 19.68 ft) with a free height of 2.20 m ( 7.21 ft), ideal for storage of salvage gear, construction, maintenance and diving equipment. .

**DECK** :Access hatch to hold on starboard near crane 1.50 x 1.40 m  
225 m<sup>2</sup> free deck space, of which 160 m<sup>2</sup> is covered with timber :Total deck load 280 tonne.

### FOUR POINT MOORING

**Bow** Two (2) single drum Norwinches one on each corner, hydraulically driven. Prime mover port engine.

:Each winch'is fitted with 220 meters (721 ft), 18 mm diameter 6 x 36 + stk. Wire rope. 2 Stockless anchors.

**Stern** Two (2) single drum Norwiches one on each corner, hydraulically driven. Prime mover port engine.

Each winch is fitted with 220 meters (721 ft), 18 mm diameter 6 x 36 +stk. Wire rope. 2 Stockless anchors.  
Anchors Six (6) approximately 900 kgs. Each.

### **ACCOMMODATION**

Accommodation for 8 persons over 4 cabins, below main deck.  
Fully heated and air-conditioned. Fully equipped galley, mess room, showers and toilets in superstructure on deck level.

### **BRIDGE**

Oberservator compass  
Racal-Decca full elec-plot color Radar  
Furuno sea digital auto-pilot  
Apelco VHF (2) radios  
Lowrance Global Nav.310 D-GPS  
Arma-Brown Gyro compass + NMEA, plus navitron interface repeater  
Geonav elec. Track plotter  
Koden color echo sounder 300 w 200K.C

### **FULLY REVOLVING CRANE**

Type 75 Metric tonne diesel driven TC 218  
Make FMC LINK-BELT  
Position Pedestal mounted at the bow, centre line @ 4 meters (13.12 ft) of the bow. Heal point @ 3.10 meters ( 10.17 ft) above main deck.  
Boom length 24.40 meters ( 80 ft) can be extended or shortened if so required.

Lifting capacities with fitted boom length of 24.40 meters (80 ft)

<b>Over the bow</b>	<b>Radius</b>	<b>Revolving:</b>
36.63 metric tonne	6.10 m (20 ft)	18.77 metric tonne
31.35	7.62 (25 ft)	15.03
25.39	9.15 (30 ft)	12.57
21.21	10.67 (35 ft)	10.70
18.15	12.20 (40 ft)	9.35
13.92	15.25 (50 ft)	7.46
10.92	18.30 (60 ft)	5.20
8.82	21.35 (70 ft)	5.08
7.30	32.40 (80 ft)	4.67

**PUSH FENDERS** Vessel is newly fitted with two (2) rubber push/bow fenders.

**DECK WINCH** Single drum electric/hydraulic deck winch is fitted on portside aft Near the crane's boom rest.

Capacity, line pull 11 metric tonne  
Winch wire can be routed through the crane's pedestal to the bow to reach the sea bed and via a heavy deck roller near the pedestal the wire can be routed to the stern.

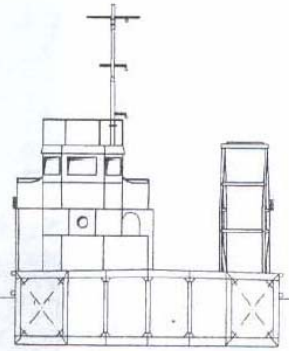
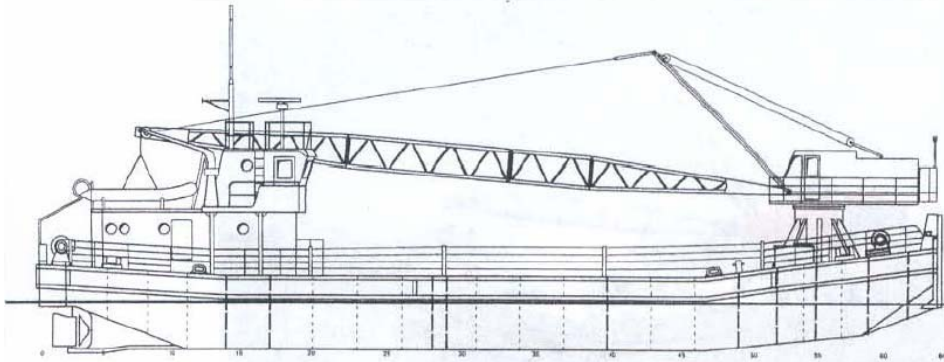
### **BOW ROLLER OPTIONS**

Heavy duty roller bank is placed at the bow amidships.  
The vessel can be prepared with two (2) spud poles and a bow thrusters.

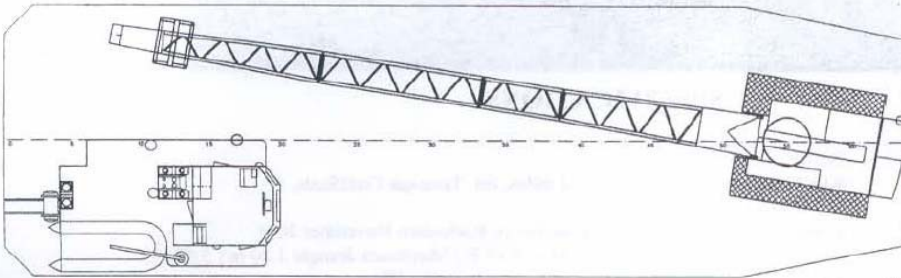




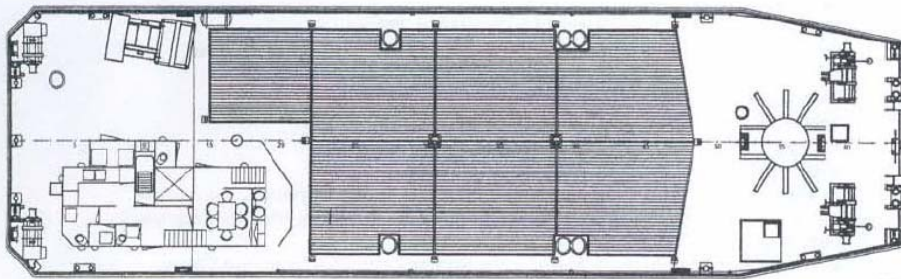
TOPDECK



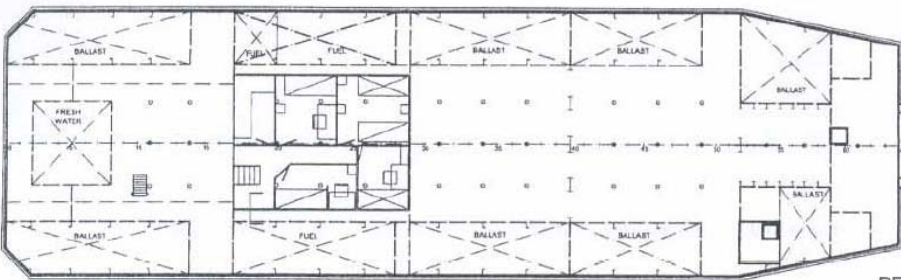
CROSS SECTION



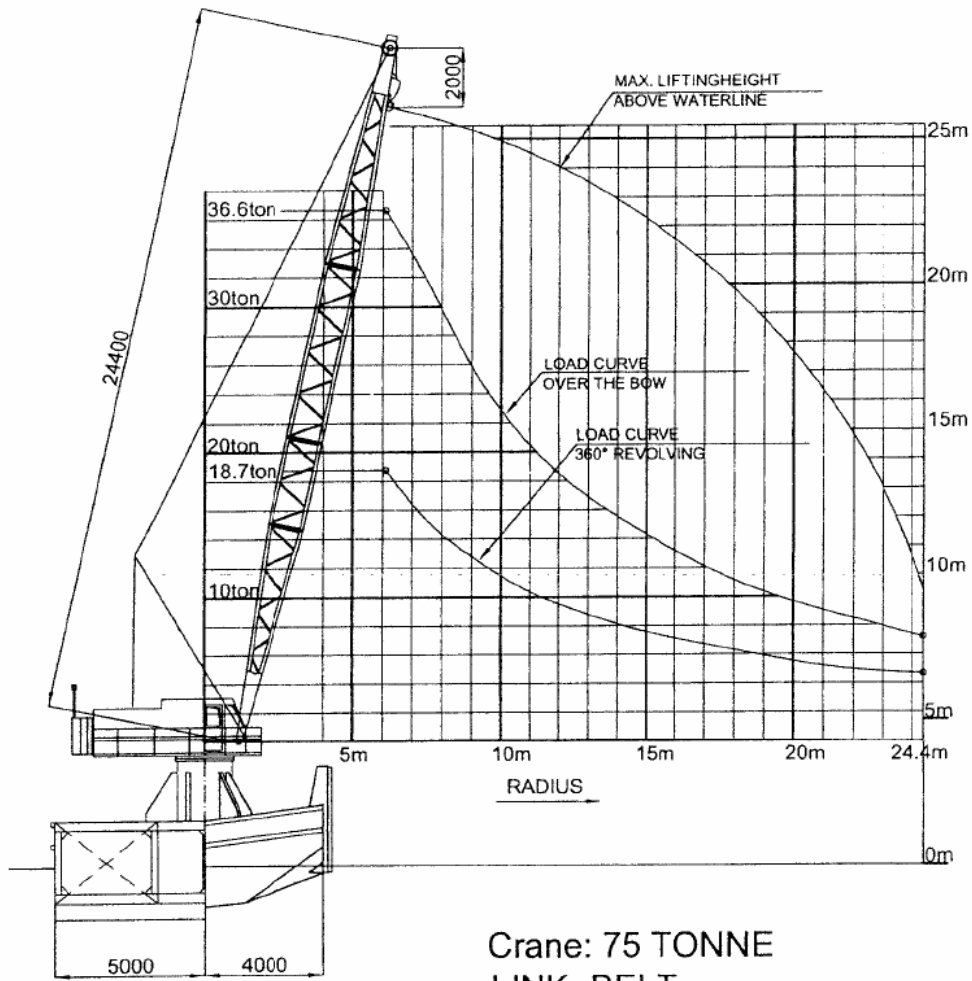
BRIDGE DECK



MAINDECK



BELOW  
MAINDECK



Crane: 75 TONNE  
LINK- BELT  
TYPE TC 218